



January 2025

Discover Non-Profits in Cape May County

Welcome to the Chamber's Non-Profit Newsletter, spotlighting news, events, and more of the extraordinary non-profit organizations in Cape May County!

Giving Spotlight: Fins Bar & Grille



Sunday Socials at Fins Bar & Grille Support Local Non-Profits

Each winter, Fins Bar & Grille in Cape May hosts its "Sunday Socials" brunch series, blending good food with community impact. Held every Sunday from 10:30 am to 2 pm, these events are a collaborative effort to support local non-profit organizations.

Fins donates 50% of the proceeds from brunch sales to a different non-profit each week. Over the years, organizations such as Cape May Stage, Cape May MAC, Cape May County Coast Guard Community Foundation, Kiwanis Club, Animal Outreach, East Lynne Theater, NJ Audubon, Soroptimist Club, Family Promise and The Branches Outreach have benefited from this initiative.

In addition to contributing to a good cause, attendees enjoy live music, a make-your-own Bloody Mary and mimosa bar, and a variety of breakfast and lunch offerings. Sunday Socials highlight the value of community partnerships, showcasing how local businesses and non-profits can work together to create meaningful change. These events serve as a reminder of the important role local establishments play in supporting their communities.

To learn more about Fins Bar & Grille, visit their [website](#) or [Facebook page](#).

We want to hear from you! If you have been involved with a non-profit organization and have an inspiring story to share, we would love to feature it in our newsletter. Whether it's about volunteering, fundraising, or any act of kindness, your experiences can inspire others to make a difference. Please send your stories and photos to events@cmcchamber.com and help us celebrate the incredible work being done in our community.

Welcome to Our Newest Non-Profit Member:



American Legion Post 184, located in Wildwood, is a welcoming community for veterans who have honorably served the United States. The post brings together veterans from across the country who visit the shore town, fostering camaraderie and support. For decades, the Legion has been an integral part of the community, providing disaster relief and helping those in need. Recently, Post 184 created a Disaster Relief Task Force that visits natural disaster-prone areas, such as Florida after the hurricane, to deliver essential supplies. The Legion's Canteen is open daily, with the kitchen serving on weekends, and all veterans and their guests are welcome. With a strong sense of family and an ever-growing membership, Post 184 offers veterans a place to connect and call home. [Learn more.](#)

Visit our Non-Profit Member Directory

In the News:



CMC Chamber Education Foundation Elects Michael J. Donohue, Esq. President, 2025 Slate of Officers and New Trustees

The Cape May County Chamber Education Foundation elected Michael J. Donohue, Esq. President of the Board of Trustees on January 2, 2025. Donohue is a distinguished attorney based in Cape May County, bringing extensive legal expertise and leadership to his roles. A former New Jersey Superior Court Judge, he currently practices law at Blaney, Donohue & Weinberg P.C. in Avalon. In addition to his legal career, Donohue was recently re-elected as Chairman of the Cape May County Republican Organization (CapeGOP), reflecting his continued commitment to public service and community leadership.

When asked why he invests his time in the Chamber Education Foundation, Donohue said, "Education is the bedrock of every community. It is an honor to be asked to play a role with the Cape May County Chamber Education Foundation. I look forward to working with the other members to work to provide enhanced scholarship opportunities to our young people in Cape May County."

"We are thrilled to welcome Michael J. Donohue as the new President of the Education Foundation," says Barbara Stafford Jones, Education Foundation Executive Director, "Michael's unwavering support for our mission and his deep commitment to education make him an exceptional fit for this role. His leadership will be instrumental in advancing our efforts to empower Cape May County

students and future leaders through innovative programs and scholarships. We are excited to work with him to build a brighter future for our community." [Read more.](#)

[Learn more about the Education Foundation.](#)



Cape May County Chamber EDUCATION FOUNDATION

Now Accepting Scholarship Applications!

The Cape May County Chamber Education Foundation is excited to announce that applications are now open for a variety of scholarship opportunities. These include funding for Dual and Concurrent Credit Programs (deadline Feb. 25, 2025) and scholarships for graduating high school seniors pursuing college or trade schools (deadline April 13, 2025). Since its establishment in 2015, the Foundation has proudly awarded over \$73,000 in scholarships to support students in achieving their educational goals across a range of programs.

The Education Foundation is dedicated to the enhancement, promotion, and support of educational and training programs. These programs are designed to cultivate the skills, knowledge, and leadership of local professionals and youth, with the ultimate goal of advancing our county's talent pool, entrepreneurial spirit, and economic growth.

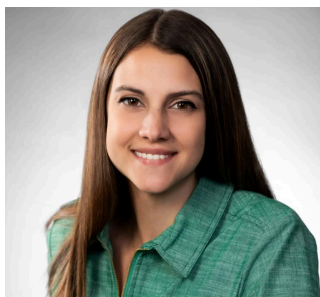
[Learn more about the Education Foundation Scholarships.](#)



Atlantic/Cape May

If You Have a Loved One Living with a Mental Illness, You're Not Alone

NAMI (National Alliance on Mental Illness) Atlantic/Cape May offers a monthly peer-led Family Support Group for adults (18+) who have a loved one with a mental health condition. The support group is free and meets on the fourth Thursday of the month in the Cape May Court House public library at 30 Mechanic Street from 7:00 to 8:30 p.m. The Family Support Group provides participants with an opportunity share their stories with others who also have a loved one living with a mental illness. Participants can gain insight from the challenges and successes of others facing similar experiences in an empathetic and supportive environment, and learn about available resources. [Read more.](#)



The Branches Outreach Welcomes New Executive Director

The Branches Outreach announced Alana Maldonado as its new Executive Director. Alana brings extensive experience to The Branches Outreach, having spent six years at Cape Assist, a nonprofit focused on substance use prevention and treatment in Cape May County. She held roles in program coordination, community outreach, and mental health training, earning certifications in areas like Life Skills, Suicide Prevention, and Mental Health. Passionate about The Branches' mission, Alana believes in empowering individuals through compassion and connection to meet basic needs and achieve recovery, guided by her expertise in Human Services and Social Work. [Read more.](#)



Doo Wop Museum Nominated for Best Pop Culture Museum

The Doo Wop Preservation League and Museum, a non-profit based in Wildwood, is dedicated to celebrating the iconic culture of the 1950s and 1960s while preserving America's largest collection of mid-20th-century "Doo Wop" resort architecture. Currently, the museum is a contender in USA Today's Top 10 Reader's Choice for "Best Pop Culture Museum." Voting is open now through February 10... [Learn more.](#)

Non-Profit Upcoming Events:

CAPE MAY COUNTY NON-PROFIT SUMMIT

*** FREE TO ATTEND! ***

All Cape May County Non-Profit Organizations are Welcome!

Come prepared with your elevator pitch and brochures to showcase your organization's mission, projects, and initiatives.

It's a prime opportunity to network, exchange ideas, and forge meaningful partnerships.
Complimentary breakfast will be provided.

Presented by:



Cape May County Women's Commission

FEBRUARY 4, 2025

8:30AM - CHECK-IN

9:00AM - 11:00AM - PROGRAM

Atlantic Cape Community College
- Cape May Campus
341 Court House-South Dennis Road,
Cape May Court House, NJ 08210

**SCAN QR
CODE TO
REGISTER**



Register Online:

www.CapeMayCountyChamber.com/Summit

Email: events@cmcchamber.com

[Click here to register.](#)



Cape May County Chamber
EDUCATION FOUNDATION

Invites you to:

GOSPEL BRUNCH

~ Where Food Feeds the Body & Music Nourishes the Soul ~

Sunday, Feb. 23, 2025

1 pm - 4 pm

The Grand Hotel of Cape May

1045 BEACH AVENUE, CAPE MAY, NJ 08204



Honoring the Life and Legacy of Lois Smith

\$55 ticket

ADVANCED REGISTRATION REQUIRED

PURCHASE TICKETS ONLINE:
www.CapeMayCountyChamber.com/Brunch

or Call the Chamber at: 609-465-7181



*Proceeds benefit the Cape May County Chamber of Commerce Education Foundation and
The Chamber of Commerce of Greater Cape May Foundation.*



Funding has been made possible in part by the New Jersey State Council on the Arts / Department of State, the National Endowment for the Arts, and The Cape May County Board of County Commissioners through the Division of Culture & Heritage.



[Click Here for More Information and Tickets!](#)

- **No Limits Academy**, located in Rio Grande, is a nonprofit organization that teaches children skills for personal, professional, and spiritual development through boxing. On Jan. 25, they will have its Amateur Boxing Show from 4pm-8pm at its facility. Tickets are \$20 in advance or \$25 at the door... [Learn more.](#)
- **Lunch with Lynch** is dedicated to enhancing the educational experiences of children attending schools on Wildwood Island and in surrounding communities, offering opportunities both inside and beyond the classroom. The organization will host its annual FreeZa PoLooZa Beef & Beer for the Genny Farnan Robinson Memorial on Jan. 25. The event takes place from 6pm-10pm at Bolero Resort in Wildwood featuring Animal House Band, raffles, food and fun for all. Tickets are \$25 and can be purchased online... [Learn more.](#)
- **The Longest Yarn** is a three-dimensional wool tapestry, knitted & crocheted by thousands of volunteers worldwide. It measures 80 meters (265 feet) and represents the 80 years since D-Day and the 80 hours it took for the Allies to liberate Paris. The organization will host a Beef & Beer fundraiser at Cape May VFW on Feb. 22 from 3pm-7pm to benefit veterans' support for The Longest Yarn Cape

May County coming to NAS Wildwood this spring. Tickets are \$35 and can be purchased at Cape May VFW... [Learn more.](#)

- **Right to Unite Cape May County** was founded to promote unity in the community by offering free events to the public. They will host its Third Annual Night of Love Fundraiser on Feb. 14 from 6pm-9pm, to raise funds for its annual free programs. The event will feature live music, raffle baskets, food and drinks. Tickets are \$45 each or \$75 for couples and can be purchased online... [Learn more.](#)

Candid.
Community

ATLANTICCAPE
COMMUNITY COLLEGE
Libraries


Funded by Cape May County BizHub, Atlantic Cape Foundation, and Thrive AC.

Candid connects people who want to change the world to the resources they need to do it.

As a member of Candid's Community, Atlantic Cape provides visitors with free public access to Candid's applications and resources.

At our locations, you can:

- **Get hands-on help with your fundraising search**
- **Network with other local nonprofits**
- **Research grants and funder data**



Candid Community resources are available at these Atlantic Cape locations:

Atlantic City Campus Worthington Library 1535 Bacharach Blvd. Atlantic City, NJ 08401	Cape May County Campus Mullock Family Library 341 Court House - South Dennis Rd. Cape May Court House, NJ 08210
--	--

For more information or to get assistance from a librarian, email:
Fin@atlantic.edu

Are you a Non-Profit Organization looking for fundraising assistance, networking opportunities, and grant research?

Atlantic Cape Community College offers Candid Community, a *free* public access database filled with valuable applications and resources to support your needs. This program is funded by Cape May County bizHub, Atlantic Cape Foundation, and Thrive AC and can be found at the Atlantic City and Cape May County Campuses.

For more information or to get assistance from a librarian, please email:
fin@atlantic.edu.

Are you a Non-Profit Organization with news to share or interested in our Non-Profit membership?
Please email events@cmcchamber.com



Cape May County Chamber of Commerce | P.O. Box 74 13 Crest Haven Rd. | Cape May Court House, NJ 08210 US

[Unsubscribe](#) | [Update Profile](#) | [Constant Contact Data Notice](#)



Try email marketing for free today!